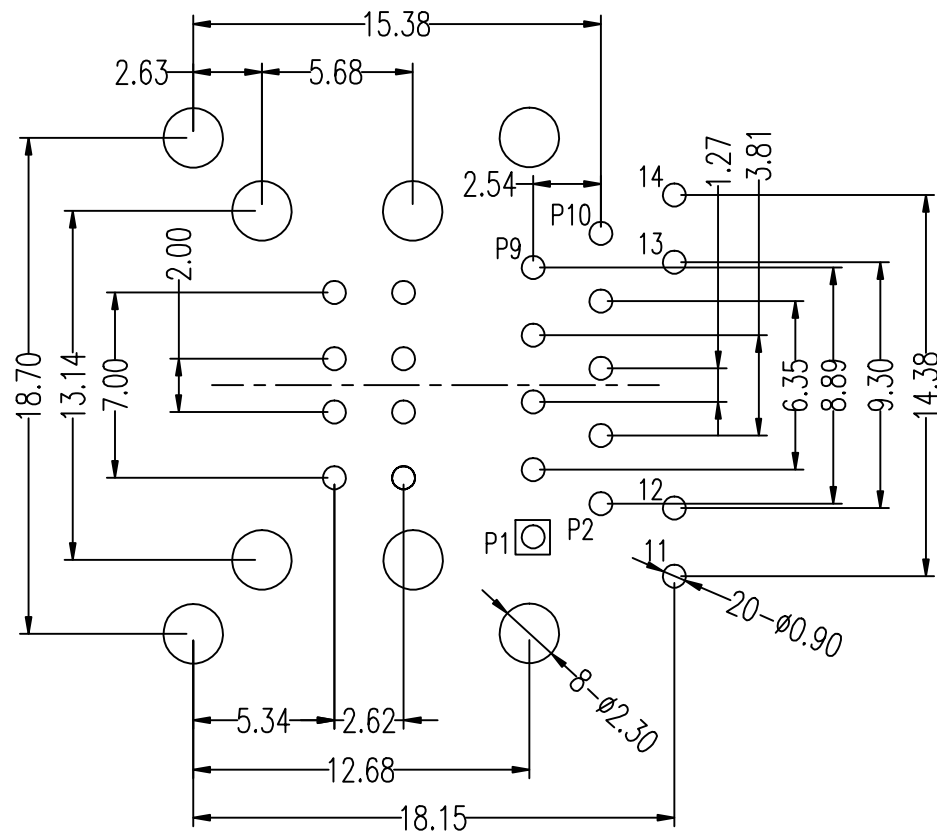


ELECTRICAL SPECIFICATIONS:

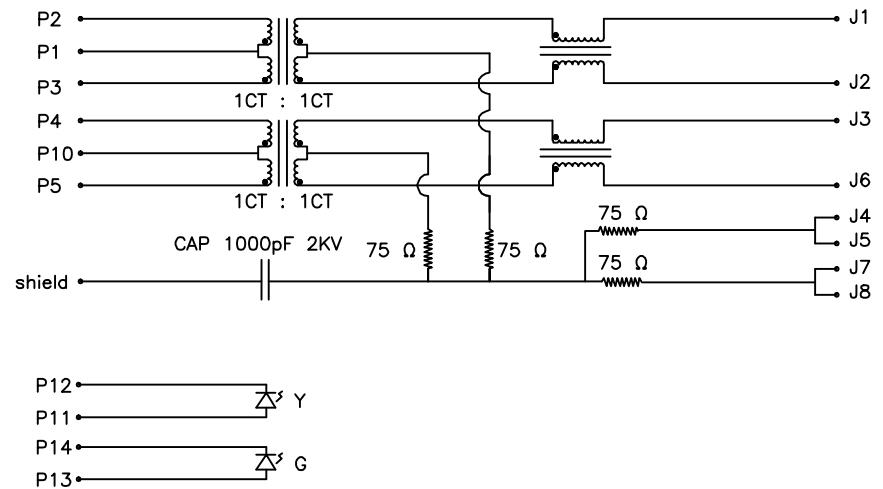
1. TURN RATIO : (P2~P3) : (J1~J2) : 1 : 1 ± 3%
(P4~P5) : (J3~J6) : 1 : 1 ± 3%
2. INDUCTANCE : (P2~P3) 350uH MIN. @0.1V, 100KHz, 8mA DC BIAS
(P4~P5) 350uH MIN. @0.1V, 100KHz, 8mA DC BIAS
3. LEAKAGE INDUCTANCE : P2~P3 (WITH J1 AND J2 SHORT) : 0.30uH MAX. @1MHz
P4~P5 (WITH J3 AND J6 SHORT) : 0.30uH MAX. @1MHz
4. INTERWINDING CAPACITANCE : (P2~P3) : (J1~J2) : 35pF MAX. @1MHz
(P4~P5) : (J3~J6) : 35pF MAX. @1MHz
5. DC RESISTANCE : (J1~J2) : (J3~J6) : (J4~J5) : (J7~J8) : 1.2Ω MAX.
6. RETURN LOSS : 1MHz TO 30MHz : -19dB MIN.
30MHz TO 60MHz : -13dB MIN.
60MHz TO 80MHz : -12dB MIN.
80MHz TO 100MHz : -10dB MIN
7. DIELECTRIC WITHSTAND : (P2~P3) : (J1~J2) : 1500VAC
(P4~P5) : (J3~J6) : 1500VAC
8. INSERTION LOSS : RS = RL=100Ω 100KHz TO 80MHz : -1.1B MIN.
9. CROSS TALK : 1MHz TO 100MHz - [33-20LOG (F/50MHz)] MIN.
10. COMMON TO COMMON MODE ATTENUATION : 30MHz TO 100MHz : 35dB TYP.
11. RoHS COMPLIANT

UNLESS OTHERWISE SPECIFIED ALL TOLERANCES ARE ± 0.25

					AOEM <small>Atech</small>		TITLE: RJ45/Dual USB Combo Connector With 10/100 Base TX	
							DWG. NO. RJC-014R	
RELEASE		04/26 /2010	KING	BETTY	KING	UNITS: M/M	SAFETY	
NO:	DESCRIPTION	DATE	BY	CHK	APPD	DATE	P/N:	SHEET 1 of 2
REVISIONS						04/26/10		DRAW KING



PCB SUGGEST PAD LAYOUT



					AOEM		TITLE RJ45/Dual USB Combo Connector With 10/100 Base TX	
							DWG. NO. RJC-014R	
RELEASE		04/26/2010	KING	BETTY	KING	UNITS: M/M	SAFETY	
NO:	DESCRIPTION	DATE	BY	CHK	APPD	DATE	P/N:	SHEET 2 OF 2
REVISIONS						04/26/10		DRAW KING